

إِنِّي أَرِقْتُ فَبِتُّ اللَّيْلَ سَاهِرَةً
أَرَعَى النُّجُومَ وَمَا كُفِّتُ رِعْيَتَهَا
وَقَدْ سَمِعْتُ وَلَمْ أُنْحَ بِهِ خَبْرًا
يَقُولُ صَخْرٌ مُقِيمٌ ثَمَّ فِي جَدِّثِ

HIGHLIGHT

LANGUAGE ANALYSIS SUITE

Upgrade your laptop, desktop, or workgroup with the most powerful multilingual text analytic and processing software to:

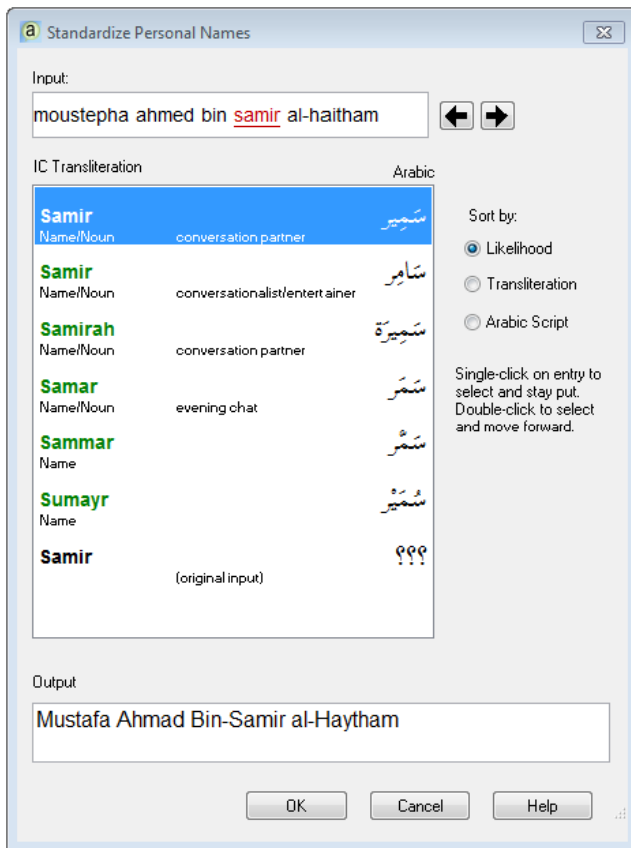
- **Resolve** different spellings of foreign persons, places, and organizations to standard forms.
- **Translate** name lists, telephone directories, and personnel databases from foreign languages into English.
- **Connect** place names appearing in reports with locations on maps.
- **Access** multilingual dictionaries and databases of key terms.
- **Comply** with USG transliteration standards for Arabic, Chinese, Dari, Farsi, Korean, Pushto and other languages.
- **Support** DOCEX, DOMEX, CELLEX, HUMINT, and SIGINT missions.

Highlight Language Analysis Suite

Transliteration Assistant

Automatic disambiguation of Arabic names

Microsoft Office plug-in correctly translates foreign names into English according to applicable government standards. Enables linguists and analysts to achieve significant productivity gains for such tasks as translation, summarization, and report writing.



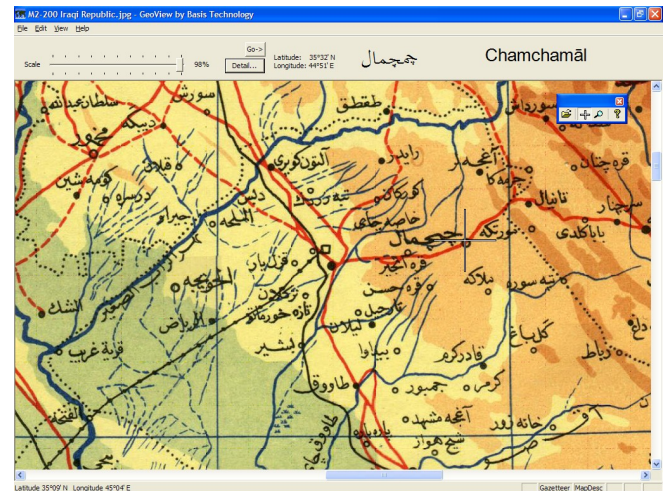
Transliteration Assistant accepts approximate spellings of foreign names and rewrites them to conform to the approved IC standard spelling. When multiple possibilities exist, the user may choose from a list of possible choices. Batch processing option enables automatic transliteration of large name databases such as telephone directories, cell phone contact lists, and personnel rosters.

Fully supported applications include Microsoft Word, Microsoft Excel, and Microsoft Access.

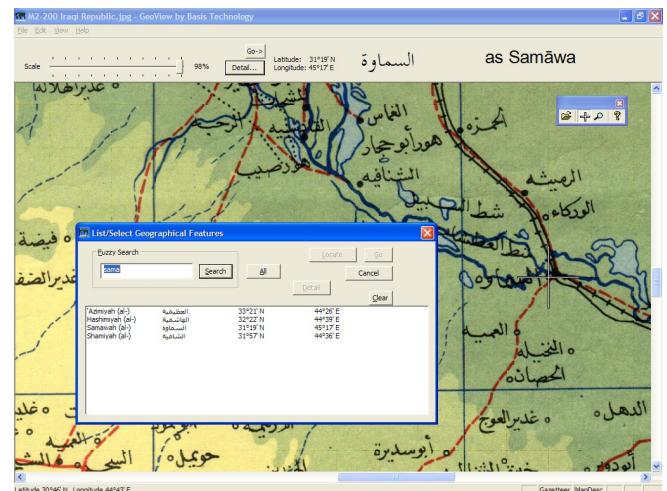
Geoscope

Rapid map viewing with place name lookup

Lightweight, interactive application locates geographic features on a map in response to place name queries entered in English or in foreign language. Designed to support geospatial and all-source intelligence analysts focused on the Arabic-speaking regions of the Middle East.



Geoscope contains extensive linguistic knowledge of Arabic and Persian naming conventions for geographic features and has a database of the authoritative Arabic script names of major geographic features in Iraq.

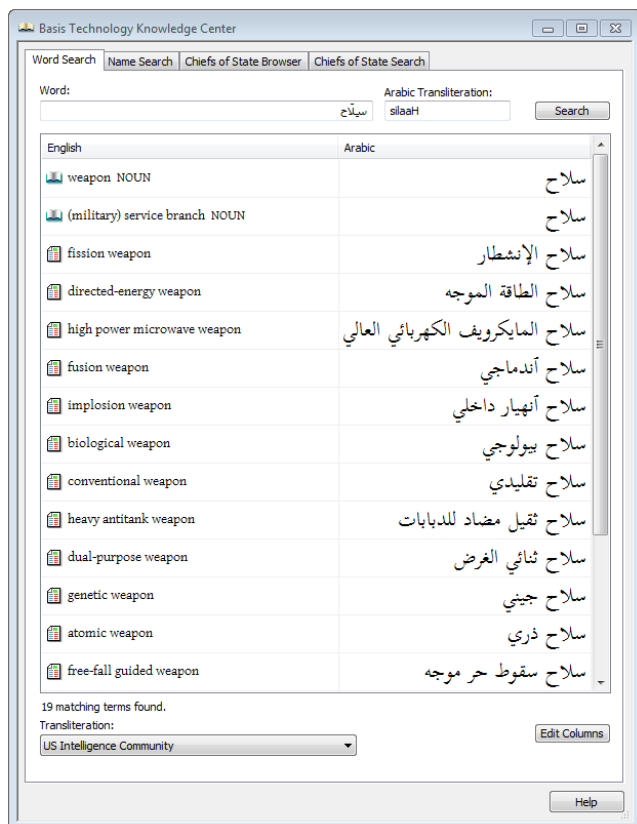




Knowledge Center

Centralized access to dictionaries and databases

Quickly access multilingual dictionaries, word lists, gazetteers (place name databases), and the CIA's Chiefs of State database. Integrates tightly with Microsoft Office and Google Earth.

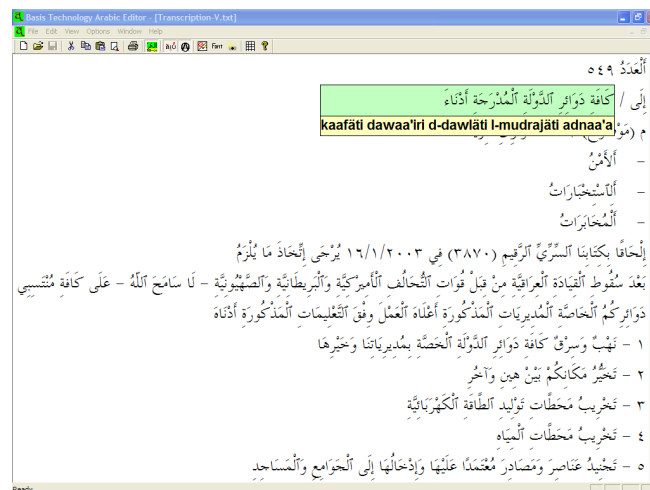


Words, people, and places may be looked up by typing them in either English or Arabic, and results may be quickly pasted back into the document being edited.

Arabic Editor

Easy way to type and edit Arabic and Persian text

A simple and powerful method for entering and editing Arabic text from a standard keyboard or laptop computer. Arabic Editor employs a transcription system which approximates Arabic sounds in English.



Arabic Editor also incorporates an Arabic-to-English dictionary to simplify the browsing and reading of Arabic web pages, e-mail, and other documents.



About Basis Technology

Basis Technology provides software solutions for text analytics, information retrieval, digital forensics, and identity resolution in over forty languages. Our Rosette® linguistics platform is a widely used suite of interoperable components that power search, business intelligence, e-discovery, social media monitoring, financial compliance, and other enterprise applications.

Our company is at the forefront of applied natural language processing using a combination of statistical modeling, expert rules, and corpus-derived data.

Leading software vendors, content providers, financial institutions, and government agencies worldwide rely on Basis Technology's solutions for Unicode compliance, language identification, multilingual search, entity extraction, name indexing, and name translation. Our products and services are used by over 250 major firms, including Cisco, EMC, Endeca, Exalead/Dassault, Hewlett-Packard, Microsoft, Oracle, and Symantec. Our text analysis products are widely used in the U.S. defense and intelligence industry by such firms as CACI, Lockheed Martin, MITRE, Northrop Grumman, SAIC, and SRI. We are the top provider of multilingual technology to web and e-commerce search engines, including Amazon.com, Bing, Google, and Yahoo!.

Company headquarters are in Cambridge, Massachusetts, with branch offices in San Francisco, California; Herndon, Virginia; and Tokyo, Japan. For more information, visit www.basistech.com.

© 2012 Basis Technology Corporation. "Basis Technology", "Geoscope", "Odyssey Digital Forensics", "Rosette", and "We Put the World in the World Wide Web" are registered trademarks of Basis Technology Corporation. All other trademarks, service marks, and logos used in this document are the property of their respective owners. (2012-01-19)

Selected Government Customers

Berico Technologies
CACI International
In-Q-Tel
Lockheed Martin
MITRE
Northrop Grumman
SAIC
U.S. Department of Defense
U.S. Department of Justice
U.S. Intelligence Community

Selected Commercial Customers

Attivio
Autodesk
Cisco
Clearwell Systems
EMC
Endeca
Exalead/Dassault Systemes
Fujitsu
Google
Hitachi
HP
NEC
NTT Resonant
Microsoft
Oracle
Symantec
Yahoo!



Visit

www.basistech.com

Write

info@basistech.com

Call

617-386-2090

Boston

One Alewife Center, Cambridge, MA 02140

Washington, D.C.

2553 Dulles View Drive, Herndon, VA 20171

San Francisco

171 Second Street, San Francisco, CA 94105