

Geoscope Map Viewer

Rapid Map Viewing with Multilingual Place Name Lookup

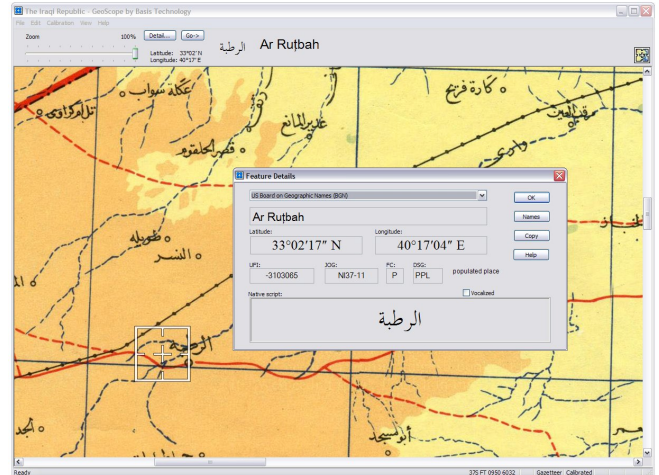
The Geoscope® Map Viewer is a high performance, interactive, map viewing application designed to support the work of geospatial intelligence analysts focused on the Middle East and Central Asia.

In addition to providing features present in conventional map viewers, Geoscope utilizes sophisticated cross-script search technology to locate geographic features by entering queries in either Arabic or Latin script, i.e., using "approximate English."

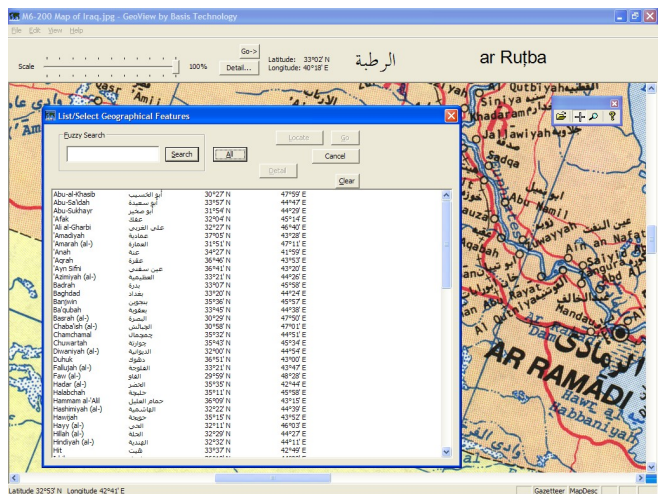
The Geoscope Map Viewer works with a sample collection of high-resolution maps in which the geographic features are captioned in Arabic script. Also included is an electronic gazetteer of the major geographic features of the region, with names rendered authoritatively in Arabic script.

FEATURES

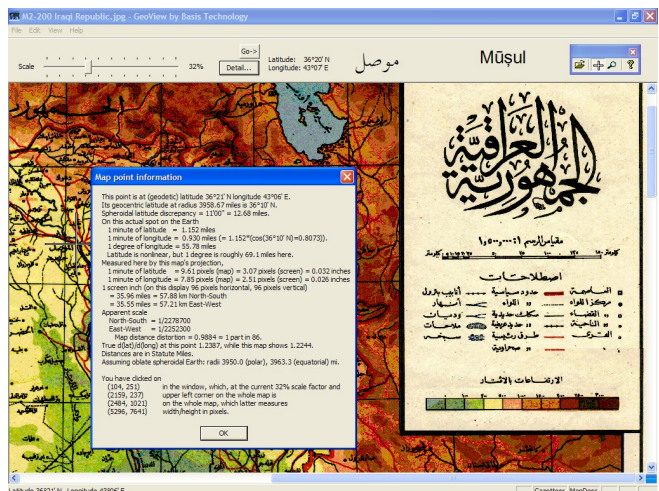
- Rapid pan and zoom of maps up to 100 megapixels in size.
- Position map to location identified by the gazetteer or to specific latitude and longitude coordinates.
- Extensive linguistic knowledge of Arabic and Persian naming conventions for geographic features.
- Extensive status displays of detailed geospatial data.
- Display of geographic data in any of the following formats: vocalized Arabic script, unvocalized Arabic script, Board of Geographic Names (BGN) transliteration, or draft Intelligence Community transliteration standard.
- Easily extended by end-users. Supports import of scanned paper maps. Provides a map calibration facility which is operated simply by pointing and clicking on latitude/longitude intersection points.
- Map encryption option to enforce intellectual property rights if required.



The Geoscope Map Viewer enables rapid lookup of place names in the Arabic-speaking world.

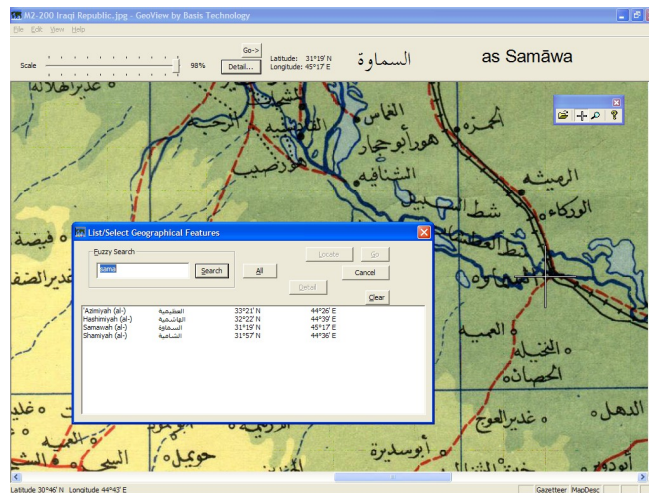


Extensive gazetteers of place names in the Middle East are provided in both Arabic and English.



APPLICATIONS

- Spatially-guided or gazetteer-guided browsing of maps.
- Comparison of multiple maps and gazetteers to ensure data integrity.
- Construction of detailed gazetteers of the Middle East in Arabic by cross-checking extant or newly developed Arabic script databases against original sources of information.
- Confirmation of correct transliteration of Arabic geographic names according to the BGN or IC standards.
- Intended users include military intelligence, geospatial intelligence, and Middle East experts. Invaluable to Arabic linguists, yet easily used by individuals with no knowledge of Arabic.

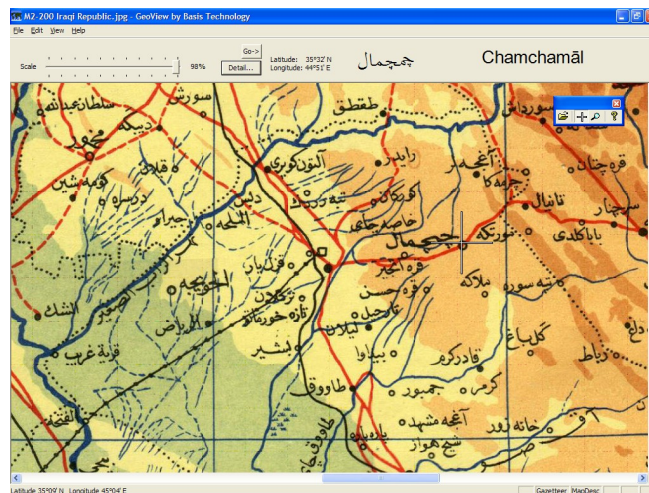


EXAMPLE SEARCH

An intelligence analyst receives a tip regarding a city which sounds something like "sama" or "samwa". Utilizing Geoscope's multilingual search capability, she enters "sama" and the following results are displayed:

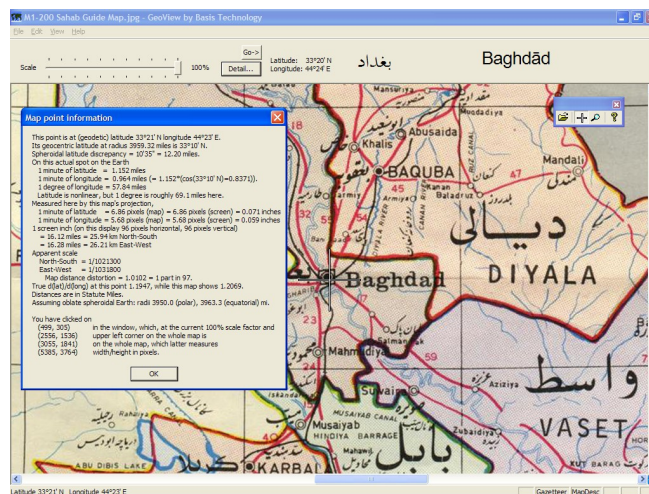
al 'Aẓīmīya	العظيمة	33°21' N	44°26' E
al Hāshimīya	الهاشمية	32°22' N	44°39' E
as Samāwa	السماوة	31°19' N	45°17' E
ash Shāmīya	الشامية	31°57' N	44°36' E

The analyst recognizes "as Samāwa" as the location of interest, clicks "Go", and the map is instantly repositioned there. Additional clicks provide further information about the location and surrounding region.



EXPLORE FURTHER

For more information or to [request an evaluation copy](#), please call us at +1-617-386-2090 or +1-800-697-2062, or write to info@basistech.com. We will be happy to assist you in evaluating the performance of our products on your data.



VISIT www.basistech.com WRITE info@basistech.com CALL +1-617-386-2090

One Alewife Center
Cambridge, MA 02140

171 Second Street
San Francisco, CA 94105

2553 Dulles View Drive
Herndon, VA 20171

9-6 Nibancho, Chiyoda-ku
Tokyo 102-0084, Japan

